



340 The Highway, London, E1W

BUTLER  STAG



Exceptionally spacious three bedroom and two bathroom apartment set within an iconic building overlooking the River Thames.



- Three Bedroom Apartment
- Fantastic Resident Facilities
- Private Balcony with River Views
- Furnished
- Iconic Riverside Development
- Two Bathrooms
- Limehouse and Shadwell Stations Nearby
- Available from 15th October 2025

Positioned next to King Edward Memorial Park, the development features an array of exclusive resident amenities, including 24-hour concierge service, a gym, swimming pool and beautifully kept communal gardens overlooking the water.

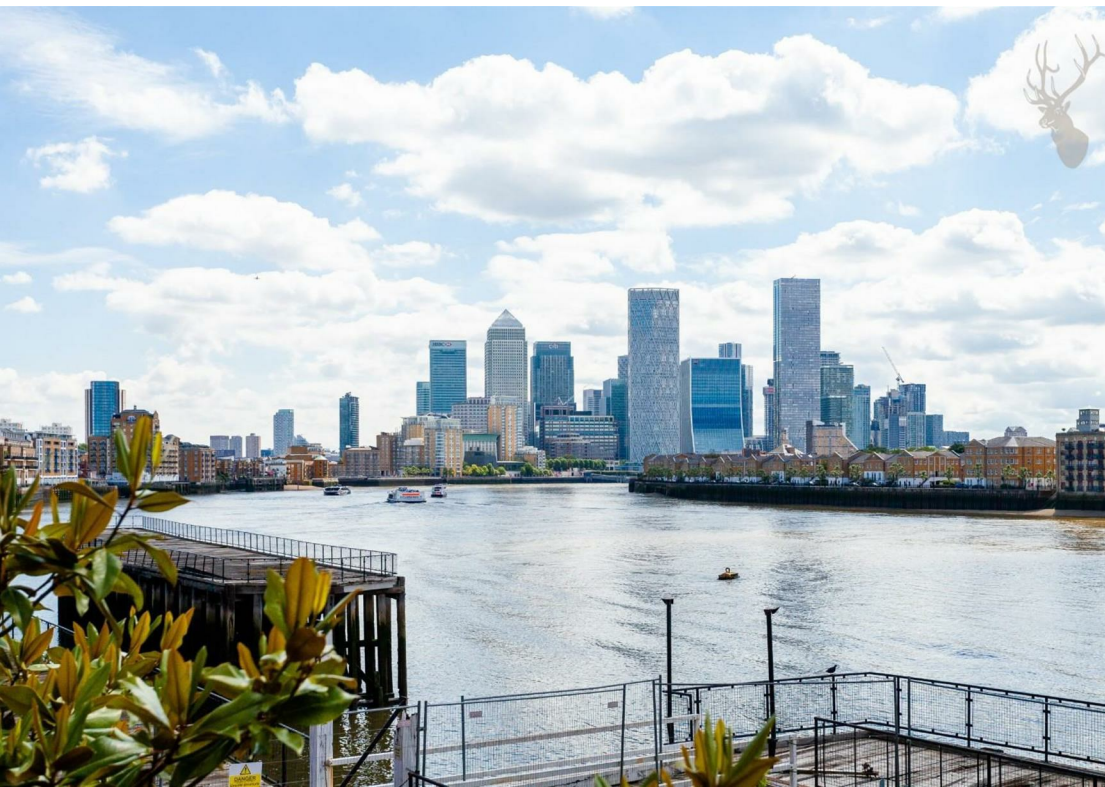
Measuring well in excess of 1000 Sq/Ft, the apartment itself comprises of three double bedrooms (one with an en-suite bathroom), a large living/dining area with access to a river-facing private balcony, a separate fitted kitchen and a main bathroom. The property is well-suited to three professional sharers or even a couple seeking a guest room and generous work-from-home space.

Located moments from historic Wapping, both Limehouse and Shadwell stations are easily accessible.

Offered furnished and available from 15th October 2025.

EPC Rating C
Council Tax Band G

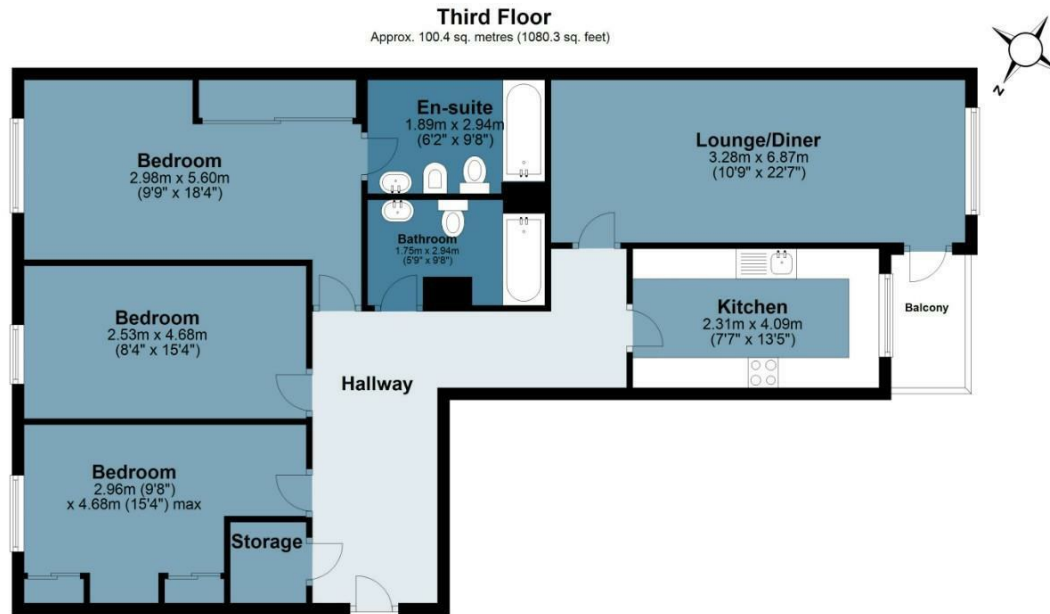




Free Trade Wharf

Approx. Gross Internal Area 100.4 Sq M (1080.3 Sq Ft)

BUTLER & STAG



Floor plan is for illustrative purposes only and is not to scale. Every attempt has been made to ensure the accuracy of the floor plan shown, however all measurements, fixtures, fittings and data shown are an approximate interpretation for illustrative purposes only.

IMPORTANT NOTICE - These particulars have been prepared in good faith and they are not intended to constitute part of an offer or contract. We have not performed a structural survey on this property and the services, appliances and specific fittings have not been tested. All photographs, measurements, floor plans and distances referred to are given as a guide and should not be relied upon.

BUTLER & STAG

☎ 020 8102 1236

🏠 508 Roman Road, Bow, London, E3 5LU

✉ bow@butlerandstag.com

www.butlerandstag.uk